

**E-Belle Delux
IPL+RF Beauty System
Model No.: KES-156**

Applications

By mainly using IPL + RF energy for hair removal, Skin rejuvenation include wrinkle improve, skin lifting and acne & pigmentation remove, vascular / capillary lesions (telangiectasis) improvement

Main Features

- Excellent cooling effect.
- Big light spot and contact area. More efficient treatment.
- 2 plug-in handpieces of IPL + bi-polar RF with CPC connectors.
- Advanced 100% sapphire high efficiency light transmission system.
- Exchangable 3 wavelength filtering inserts. Convenient treatments switch.
- Large 10.4 inch TFT touch LCD, user friendly interface, shot pulse counter.
- High quality power supply, to ensure precise and stable energy output.
- Recommend default settings for 5 diferent skin colors option.
- Multi-dimensional control, pedal switch, key switch, emergency stop.
- Warning on water level. Software anti-mistake design for handpiece connection.



Specifications

- IPL Energy 15~50J /cm2, 50 levels adjustable
- IPL wavelength 530~1200nm filter lense for skin rejuvenation
585~1200nm filter lense for vascular / acne
640~1200nm filter lense for hair removal
- Pulses width 2~10ms
- Pulses Qty 1~5
- Pulses delay 5~60ms
- Spot size A: 15 x 50 mm, B:8 x 40mm
- RF Energy: 0~50J /cm2 @ 3M Hz, 50 levels adjustable
- Cooling Semiconductor refrigerating + Water cycle
- Transmission System Sapphire crystal
- Power Source AC 100~120 or 220~240 V, 50 Hz 12A
- Dimensions / Weight 450x430x1140 mm /60Kg



Handpiece



user interface window on screen

Treatment

Treatment Setting: 3~4 treatments / course, Interval: 30days



before



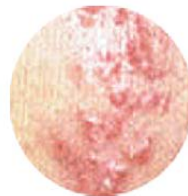
before



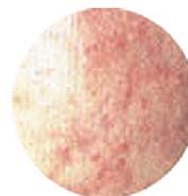
after



after



before



after

**凯尔斯
KIERS**

Beijing Kiers Science & Technology Co., Ltd

Add: 3F Bldg 1, #10 Jia Yard, Longqing St, BDA, Beijing, China

Tel: +86-10-67887443

Fax: +86-10-67869445

Web: www.kiers.com.cn

Email: cnkiers@kiers.com.cn